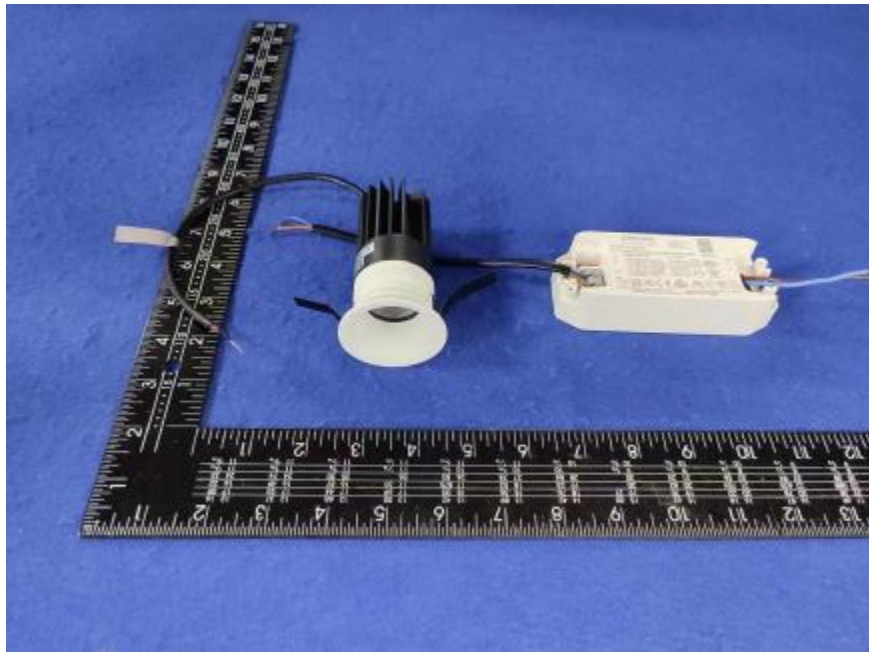


Luminaire Photograph



Light Output Ratio:	79.9%	
Luminaire Power:	11.93 W	
SHR Nominal:	0.00	Calculated using the TM5
SHR Maximum:	0.30	fine grid method.

C Range: 0 - 360DEG
C Interval: 30.0DEG
Test Speed: HIGH
Temperature: 25.3 °C
Operators: zoe
Test Date: 2023-6-2

Range: 0 - 180DEG
Interval: 1.0DEG
Test System: EVERFINE GO-SPEX500_V1 SYSTEM V2.00.461
Humidity: 65.0%
Test Distance: 3.160m [K=1.0000]
Remarks: LAMP: CMA1306-0000-000N0U0A30G Ra:90
LENS: PM-1084 15R
DRIVER: 9290 028 088 250mA
30minutes warm-up

LUMINOUS INTENSITY DISTRIBUTION DIAGRAM

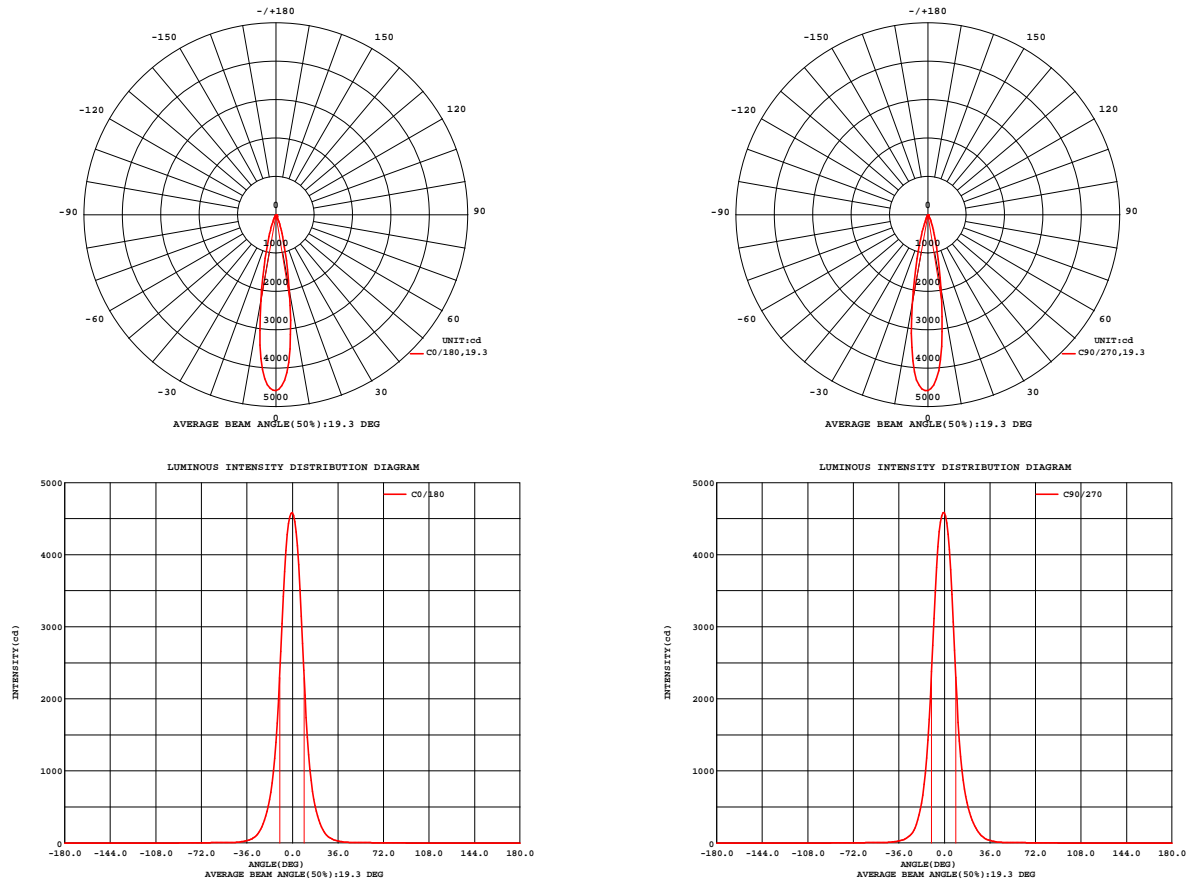


Fig. C0/C180

Fig. C90/C270

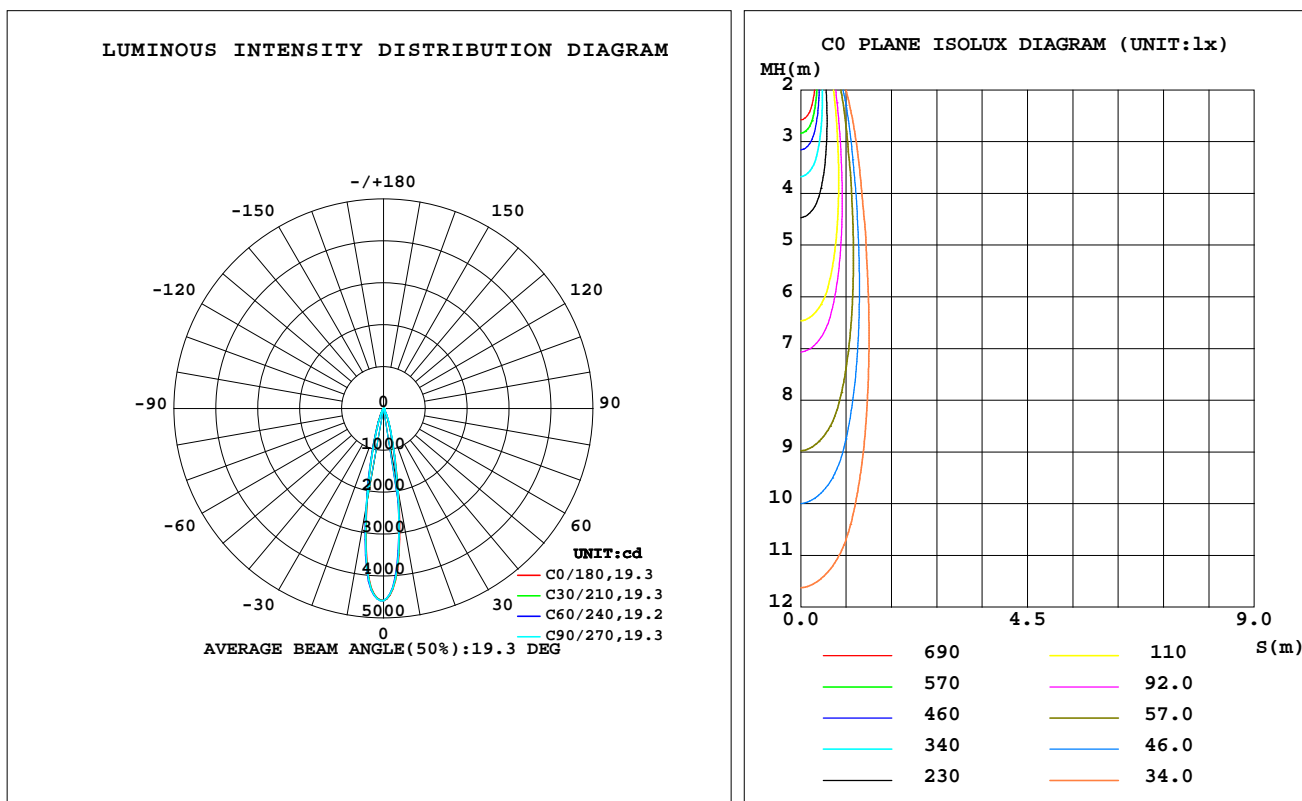
C Range: 0 - 360DEG
C Interval: 30.0DEG
Test Speed: HIGH
Temperature: 25.3 °C
Operators: zoe
Test Date: 2023-6-2

Range: 0 - 180DEG
Interval: 1.0DEG
Test System: EVERFINE GO-SPEX500_V1 SYSTEM V2.00.461
Humidity: 65.0%
Test Distance: 3.160m [K=1.0000]
Remarks: LAMP: CMA1306-0000-000N0U0A30G Ra: 90
LENS: PM-1084 15R
DRIVER: 9290 028 088 250mA
30minutes warm-up

LUMINAIRE PHOTOMETRIC TEST REPORT

Test:U:220.09V I:0.0559A P:11.930W PF:0.9667 Freq:49.99Hz Lamp Flux:896.707x1 lm		
NAME: 2318.203-ACOT-97	TYPE:	WEIGHT:
SPEC.: 3000K	DIM.:	SERIAL No.: 2306020712
MFR.: RISE	SUR.: 0.000572265m2	Shielding Angle:

DATA OF LAMP		PHOTOMETRIC DATA Eff: 60.06 lm/W			
MODEL	CREE	I _{max} (cd)	4585	S/MH(C0/180)	0.34
NOMINAL POWER(W)	12	LOR(%)	79.9	S/MH(C90/270)	0.35
RATED VOLTAGE(V)	220	TOTAL FLUX(lm)	716.47	UP,DN(C0-180)	0.0,39.0
NOMINAL FLUX(lm)	896.707	CIE CLASS	DIRECT	UP,DN(C180-360)	0.0,40.9
LAMPS INSIDE	1	up(%)	0.0	CIBSE SHR NOM	0.00
TEST VOLTAGE(V)	220	down(%)	79.9	CIBSE SHR MAX	0.30



C Range: 0 - 360DEG
C Interval: 30.0DEG
Test Speed: HIGH
Temperature:25.3℃
Operators:zoe
Test Date:2023-6-2

Range: 0 - 180DEG
Interval: 1.0DEG
Test System:EVERFINE GO-SPEX500_V1 SYSTEM V2.00.461
Humidity:65.0%
Test Distance:3.160m [K=1.0000]
Remarks: LAMP:CMA1306-0000-000N0U0A30G Ra:90
LENS: PM-1084 15R
DRIVER:9290 028 088 250mA
30minutes warm-up

ZONAL FLUX DIAGRAM

ZONAL FLUX DIAGRAM:

	C0	C45	C90	C135	C180	C225	C270	C315		zone	total	%lum,lamp
10	2050	1966	1985	2109	2288	2384	2378	2223	0- 10	315.7	315.7	44.1,35.2
20	375.2	392.4	421.9	443.9	437.9	413.8	388.1	374.6	10- 20	271.7	587.5	82,65.5
30	67.27	80.14	89.20	87.77	77.91	70.83	65.44	62.42	20- 30	86.47	673.9	94.1,75.2
40	15.72	16.99	18.88	19.06	18.09	16.48	15.67	15.43	30- 40	24.00	697.9	97.4,77.8
50	7.079	7.263	7.459	7.508	7.229	6.939	6.848	6.997	40- 50	7.500	705.4	98.5,78.7
60	5.296	5.520	5.736	5.763	5.568	5.354	5.221	5.231	50- 60	5.673	711.1	99.3,79.3
70	2.176	2.273	2.412	2.518	2.510	2.444	2.334	2.207	60- 70	3.889	715.0	99.8,79.7
80	0.4131	0.4303	0.4652	0.5143	0.5344	0.5022	0.4652	0.4109	70- 80	1.335	716.3	100,79.9
90	0	0	0	0	0	0	0	0	80- 90	0.1457	716.5	100,79.9
100	0	0	0	0	0	0	0	0	90-100	0	716.5	100,79.9
110	0	0	0	0	0	0	0	0	100-110	0	716.5	100,79.9
120	0	0	0	0	0	0	0	0	110-120	0	716.5	100,79.9
130	0	0	0	0	0	0	0	0	120-130	0	716.5	100,79.9
140	0	0	0	0	0	0	0	0	130-140	0	716.5	100,79.9
150	0	0	0	0	0	0	0	0	140-150	0	716.5	100,79.9
160	0	0	0	0	0	0	0	0	150-160	0	716.5	100,79.9
170	0	0	0	0	0	0	0	0	160-170	0	716.5	100,79.9
180	0	0	0	0	0	0	0	0	170-180	0	716.5	100,79.9
DEG	LUMINOUS INTENSITY:cd									UNIT:lm		

C Range: 0 - 360DEG
C Interval: 30.0DEG
Test Speed: HIGH
Temperature:25.3℃
Operators:zoe
Test Date:2023-6-2

Range: 0 - 180DEG
Interval: 1.0DEG
Test System:EVERFINE GO-SPEX500_V1 SYSTEM V2.00.461
Humidity:65.0%
Test Distance:3.160m [K=1.0000]
Remarks: LAMP:CMA1306-0000-000N0U0A30G Ra:90
LENS: PM-1084 15R
DRIVER:9290 028 088 250mA
30minutes warm-up

LUMINANCE LIMITATION CURVES

Test:U:220.09V I:0.0559A P:11.930W PF:0.9667 Freq:49.99Hz
Lamp Flux:896.707x1 lm

NAME: 2318.203-ACOT-97

TYPE:

WEIGHT:

SPEC.: 3000K

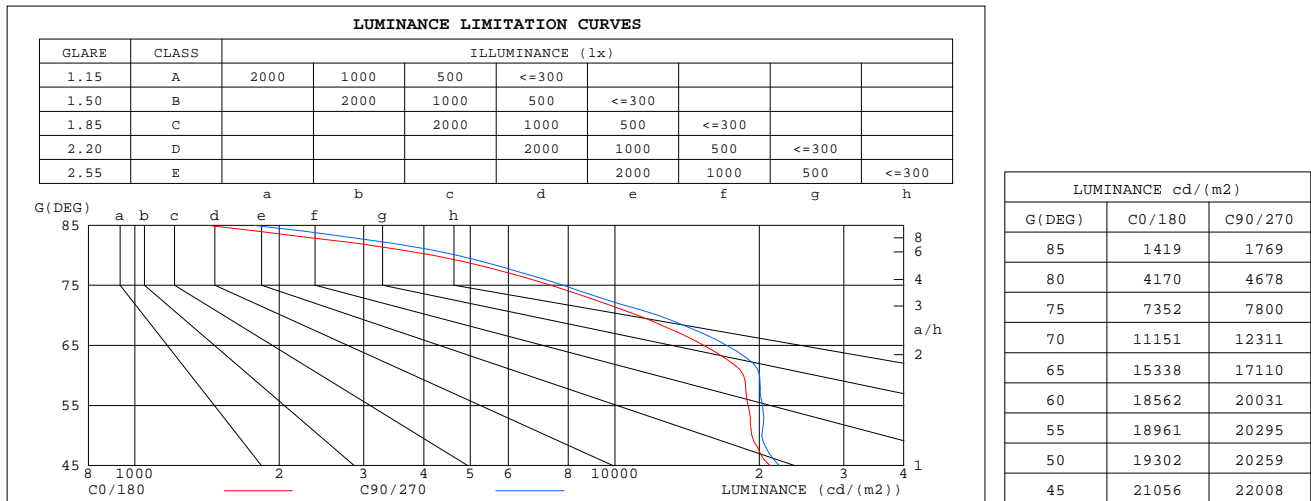
DIM.:

SERIAL No.: 2306020712

MFR.: RISE

SUR.: 0.000572265m2

Shielding Angle:



C Range: 0 - 360DEG
C Interval: 30.0DEG
Test Speed: HIGH
Temperature:25.3℃
Operators:zoe
Test Date:2023-6-2

Range: 0 - 180DEG
Interval: 1.0DEG
Test System:EVERFINE GO-SPEX500_V1 SYSTEM V2.00.461
Humidity:65.0%
Test Distance:3.160m [K=1.0000]
Remarks: LAMP:CMA1306-0000-000N0U0A30G Ra:90
LENS: PM-1084 15R
DRIVER:9290 028 088 250mA
30minutes warm-up

CU AND LUMINAIRE BUDGETARY ESTIMATE DIAGRAM

Test:U:220.09V I:0.0559A P:11.930W PF:0.9667 Freq:49.99Hz
Lamp Flux:896.707x1 lm

NAME: 2318.203-ACOT-97

TYPE:

WEIGHT:

SPEC.: 3000K

DIM.:

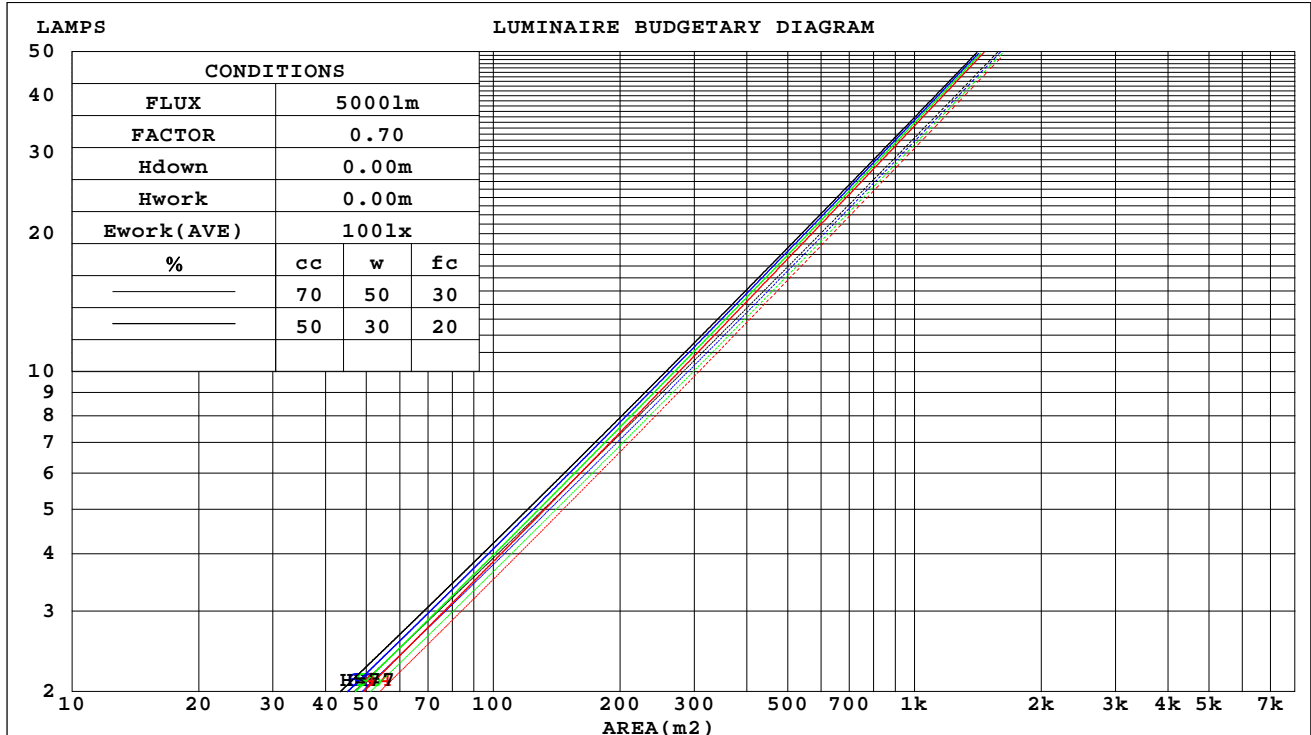
SERIAL No.: 2306020712

MFR.: RISE

SUR.: 0.000572265m2

Shielding Angle:

cc	80%			70%			50%			30%			10%			0
w	50%	30%	10%	50%	30%	10%	50%	30%	10%	50%	30%	10%	50%	30%	10%	0
fc	20%			20%			20%			20%			20%			0
RCR	RCR:Room Cavity Ratio															



C Range: 0 - 360DEG
C Interval: 30.0DEG
Test Speed: HIGH
Temperature:25.3℃
Operators:zoe
Test Date:2023-6-2

Range: 0 - 180DEG
Interval: 1.0DEG
Test System:EVERFINE GO-SPEX500_V1 SYSTEM V2.00.461
Humidity:65.0%
Test Distance:3.160m [K=1.0000]
Remarks: LAMP:CMA1306-0000-000N0U0A30G Ra:90
LENS: PM-1084 15R
DRIVER:9290 028 088 250mA
30minutes warm-up

WEC AND CCEC

Test:U:220.09V I:0.0559A P:11.930W PF:0.9667 Freq:49.99Hz Lamp Flux:896.707x1 lm		
NAME: 2318.203-ACOT-97	TYPE:	WEIGHT:
SPEC.: 3000K	DIM.:	SERIAL No.: 2306020712
MFR.: RISE	SUR.: 0.000572265m2	Shielding Angle:

cc	80%			70%			50%			30%			10%			0	
w	50%	30%	10%	50%	30%	10%	50%	30%	10%	50%	30%	10%	50%	30%	10%	0	
fc	20%			20%			20%			20%			20%			0	
RCR	RCR:Room Cavity Ratio						Wall Exitance Coefficients(WEC)										
0.0																	
1.0	.107	.061	.019	.102	.058	.018	.092	.053	.017	.083	.048	.015	.074	.043	.014		
2.0	.099	.054	.017	.095	.052	.016	.086	.048	.015	.079	.044	.014	.072	.041	.013		
3.0	.092	.049	.015	.088	.047	.014	.081	.044	.013	.075	.041	.013	.069	.038	.012		
4.0	.086	.044	.013	.083	.043	.013	.077	.041	.012	.072	.038	.012	.067	.036	.011		
5.0	.080	.041	.012	.078	.040	.012	.073	.038	.011	.068	.036	.011	.064	.034	.010		
6.0	.076	.038	.011	.073	.037	.011	.069	.035	.010	.065	.034	.010	.062	.033	.010		
7.0	.071	.035	.010	.070	.035	.010	.066	.033	.010	.063	.032	.009	.059	.031	.009		
8.0	.068	.033	.009	.066	.033	.009	.063	.032	.009	.060	.030	.009	.057	.029	.009		
9.0	.065	.031	.009	.063	.031	.009	.060	.030	.008	.058	.029	.008	.055	.028	.008		
10.0	.062	.030	.008	.060	.029	.008	.058	.028	.008	.056	.028	.008	.053	.027	.008		

cc	80%			70%			50%			30%			10%			0
w	50%	30%	10%	50%	30%	10%	50%	30%	10%	50%	30%	10%	50%	30%	10%	0
fc	20%			20%			20%			20%			20%			0
RCR	RCR:Room Cavity Ratio			Ceiling Cavity Exitance Coefficients(CCEC)												
0.0	.152	.152	.152	.130	.130	.130	.089	.089	.089	.051	.051	.051	.016	.016	.016	
1.0	.134	.126	.118	.115	.108	.102	.079	.074	.071	.045	.043	.041	.014	.014	.013	
2.0	.120	.106	.095	.103	.091	.082	.070	.063	.057	.041	.037	.033	.013	.012	.011	
3.0	.108	.090	.077	.092	.078	.067	.063	.054	.047	.037	.032	.028	.012	.010	.009	
4.0	.097	.078	.063	.084	.068	.055	.057	.047	.039	.033	.028	.023	.011	.009	.008	
5.0	.089	.068	.053	.076	.059	.046	.053	.041	.033	.030	.024	.019	.010	.008	.006	
6.0	.081	.060	.045	.070	.052	.039	.048	.036	.028	.028	.021	.016	.009	.007	.005	
7.0	.075	.054	.038	.065	.046	.034	.045	.033	.024	.026	.019	.014	.008	.006	.005	
8.0	.070	.048	.033	.060	.042	.029	.042	.029	.021	.024	.017	.012	.008	.006	.004	
9.0	.065	.044	.029	.056	.038	.025	.039	.027	.018	.023	.016	.011	.007	.005	.004	
10.0	.061	.040	.025	.053	.034	.022	.037	.024	.016	.021	.014	.009	.007	.005	.003	

C Range: 0 - 360DEG
C Interval: 30.0DEG
Test Speed: HIGH
Temperature:25.3℃
Operators:zoe
Test Date:2023-6-2

Range: 0 - 180DEG
Interval: 1.0DEG
Test System:EVERFINE GO-SPEX500_V1 SYSTEM V2.00.461
Humidity:65.0%
Test Distance:3.160m [K=1.0000]
Remarks: LAMP:CMA1306-0000-000N0U0A30G Ra:90
LENS: PM-1084 15R
DRIVER:9290 028 088 250mA
30minutes warm-up

UGR(Unified Glare Rating) Table

Test:U:220.09V I:0.0559A P:11.930W PF:0.9667 Freq:49.99Hz Lamp Flux:896.707x1 lm										
NAME: 2318.203-ACOT-97					TYPE:			WEIGHT:		
SPEC.: 3000K					DIM.:			SERIAL No.: 2306020712		
MFR.: RISE					SUR.: 0.000572265m2			Shielding Angle:		
ceiling/cavity	0.7	0.7	0.5	0.5	0.3	0.7	0.7	0.5	0.5	0.3
walls	0.5	0.3	0.5	0.3	0.3	0.5	0.3	0.5	0.3	0.3
working plane	0.2	0.2	0.2	0.2	0.2	0.2	0.2	0.2	0.2	0.2
Room dimensions	Viewed crosswise					Viewed endwise				
x = 2H y = 2H	14.9	15.5	15.1	15.7	15.8	15.5	16.2	15.7	16.3	16.5
3H	15.4	16.0	15.7	16.2	16.4	16.1	16.6	16.3	16.8	17.0
4H	15.5	16.1	15.8	16.3	16.5	16.1	16.7	16.4	16.9	17.1
6H	15.5	16.0	15.8	16.3	16.5	16.1	16.6	16.4	16.9	17.1
8H	15.5	16.0	15.8	16.2	16.5	16.1	16.6	16.4	16.8	17.1
12H	15.4	15.9	15.7	16.2	16.5	16.0	16.5	16.3	16.8	17.1
4H 2H	15.2	15.8	15.5	16.0	16.2	15.8	16.3	16.0	16.5	16.7
3H	15.8	16.3	16.1	16.6	16.8	16.4	16.9	16.7	17.1	17.4
4H	15.9	16.4	16.3	16.7	17.0	16.5	16.9	16.8	17.2	17.5
6H	15.9	16.3	16.3	16.7	17.0	16.5	16.9	16.8	17.2	17.5
8H	15.9	16.3	16.3	16.6	17.0	16.4	16.8	16.8	17.1	17.5
12H	15.9	16.2	16.3	16.6	16.9	16.4	16.7	16.8	17.1	17.5
8H 4H	15.9	16.3	16.3	16.6	17.0	16.4	16.8	16.8	17.1	17.5
6H	15.9	16.2	16.3	16.6	17.0	16.4	16.7	16.8	17.1	17.5
8H	15.9	16.2	16.3	16.6	17.0	16.4	16.6	16.8	17.1	17.5
12H	15.8	16.1	16.3	16.5	17.0	16.3	16.6	16.8	17.0	17.5
12H 4H	15.9	16.2	16.3	16.6	17.0	16.4	16.7	16.8	17.1	17.5
6H	15.9	16.1	16.3	16.6	17.0	16.4	16.6	16.8	17.0	17.5
8H	15.8	16.1	16.3	16.5	17.0	16.3	16.6	16.8	17.0	17.5
Variations with the observer position at spacings(CIE Pub.117):										
S = 1.0H	+ 1.1 / - 1.1					+ 1.5 / - 1.2				
1.5H	+ 2.2 / - 0.9					+ 3.0 / - 1.1				
2.0H	+ 0.3 / - 0.6					+ 0.3 / - 0.8				

CIE Pub.117, 896.7 lm Total Lamp Luminous Flux Correct (8log(F/F0) = -0.4)
Area: 0.000572265 m2

C Range: 0 - 360DEG
C Interval: 30.0DEG
Test Speed: HIGH
Temperature:25.3℃
Operators:zoe
Test Date:2023-6-2

Range: 0 - 180DEG
Interval: 1.0DEG
Test System:EVERFINE GO-SPEX500_V1 SYSTEM V2.00.461
Humidity:65.0%
Test Distance:3.160m [K=1.0000]
Remarks: LAMP:CMA1306-0000-000N0U0A30G Ra:90
LENS: PM-1084 15R
DRIVER:9290 028 088 250mA
30minutes warm-up

UTILIZATION FACTORS TABLE

Test:U:220.09V I:0.0559A P:11.930W PF:0.9667 Freq:49.99Hz Lamp Flux:896.707x1 lm		
NAME: 2318.203-ACOT-97	TYPE:	WEIGHT:
SPEC.: 3000K	DIM.:	SERIAL No.: 2306020712
MFR.: RISE	SUR.: 0.000572265m2	Shielding Angle:

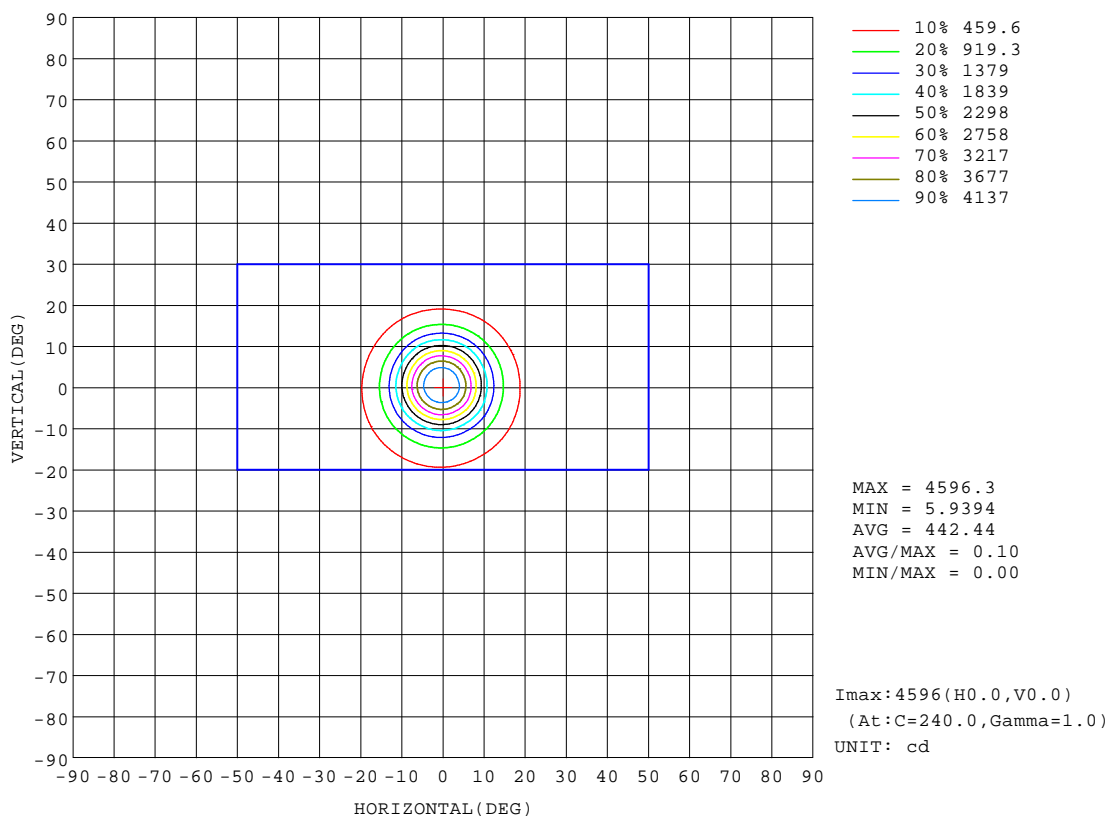
REFLECTANCE										
Ceiling	0.8	0.8	0.8	0.7	0.7	0.7	0.5	0.5	0.5	0
Walls	0.7	0.5	0.3	0.7	0.5	0.3	0.7	0.5	0.3	0
Working plane	0.2	0.2	0.2	0.2	0.2	0.2	0.2	0.2	0.2	0
ROOM INDEX	UTILIZATION FACTORS(PERCENT) $k(RI) \times RCR = 5$									
k = 0.60	72	67	64	71	67	64	71	67	64	62
0.80	78	73	70	77	73	70	76	72	70	67
1.00	81	76	74	80	76	74	79	76	73	70
1.25	84	80	77	83	79	77	81	78	76	73
1.50	86	82	80	85	81	79	83	80	78	75
2.00	87	84	82	86	83	81	84	82	80	76
2.50	89	86	84	87	85	83	85	83	81	77
3.00	90	87	85	88	86	84	86	84	83	78
4.00	91	89	88	90	88	87	87	85	84	79
5.00	92	91	89	91	89	88	87	86	86	80
ROOM INDEX	UF(total)									Direct
According to DIN EN 13032-2 2004			Suspended					SHRNOM = 1.25		

C Range: 0 - 360DEG
C Interval: 30.0DEG
Test Speed: HIGH
Temperature:25.3℃
Operators:zoe
Test Date:2023-6-2

Range: 0 - 180DEG
Interval: 1.0DEG
Test System:EVERFINE GO-SPEX500_V1 SYSTEM V2.00.461
Humidity:65.0%
Test Distance:3.160m [K=1.0000]
Remarks: LAMP:CMA1306-0000-000N0U0A30G Ra:90
LENS: PM-1084 15R
DRIVER:9290 028 088 250mA
30minutes warm-up

ISOCANDELA DIAGRAM

Test:U:220.09V I:0.0559A P:11.930W PF:0.9667 Freq:49.99Hz Lamp Flux:896.707x1 lm		
NAME: 2318.203-ACOT-97	TYPE:	WEIGHT:
SPEC.: 3000K	DIM.:	SERIAL No.: 2306020712
MFR.: RISE	SUR.: 0.000572265m2	Shielding Angle:

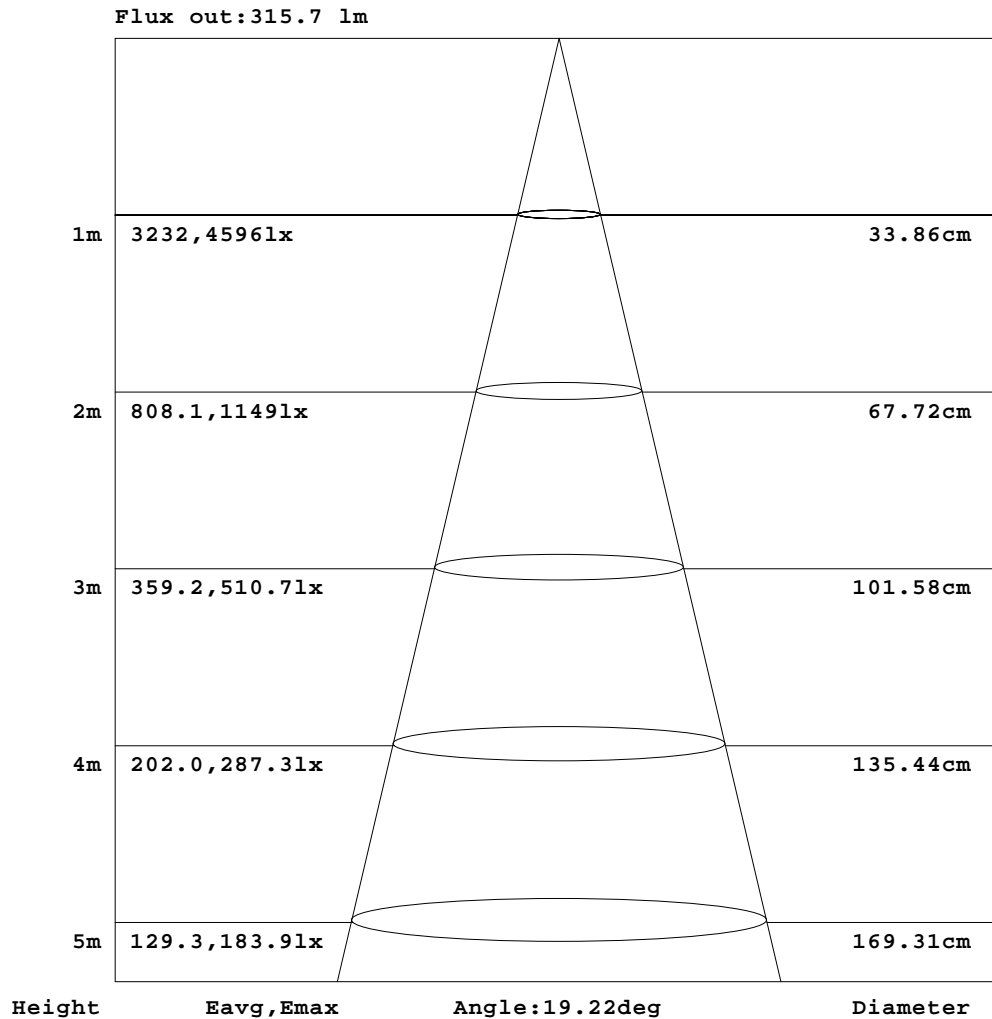


C Range: 0 - 360DEG
C Interval: 30.0DEG
Test Speed: HIGH
Temperature:25.3℃
Operators:zoe
Test Date:2023-6-2

Range: 0 - 180DEG
Interval: 1.0DEG
Test System:EVERFINE GO-SPEX500_V1 SYSTEM V2.00.461
Humidity:65.0%
Test Distance:3.160m [K=1.0000]
Remarks: LAMP:CMA1306-0000-000N0U0A30G Ra:90
LENS: PM-1084 15R
DRIVER:9290 028 088 250mA
30minutes warm-up

AAI Figure

Test:U:220.09V I:0.0559A P:11.930W PF:0.9667 Freq:49.99Hz Lamp Flux:896.707x1 lm		
NAME: 2318.203-ACOT-97	TYPE:	WEIGHT:
SPEC.: 3000K	DIM.:	SERIAL No.: 2306020712
MFR.: RISE	SUR.: 0.000572265m2	Shielding Angle:



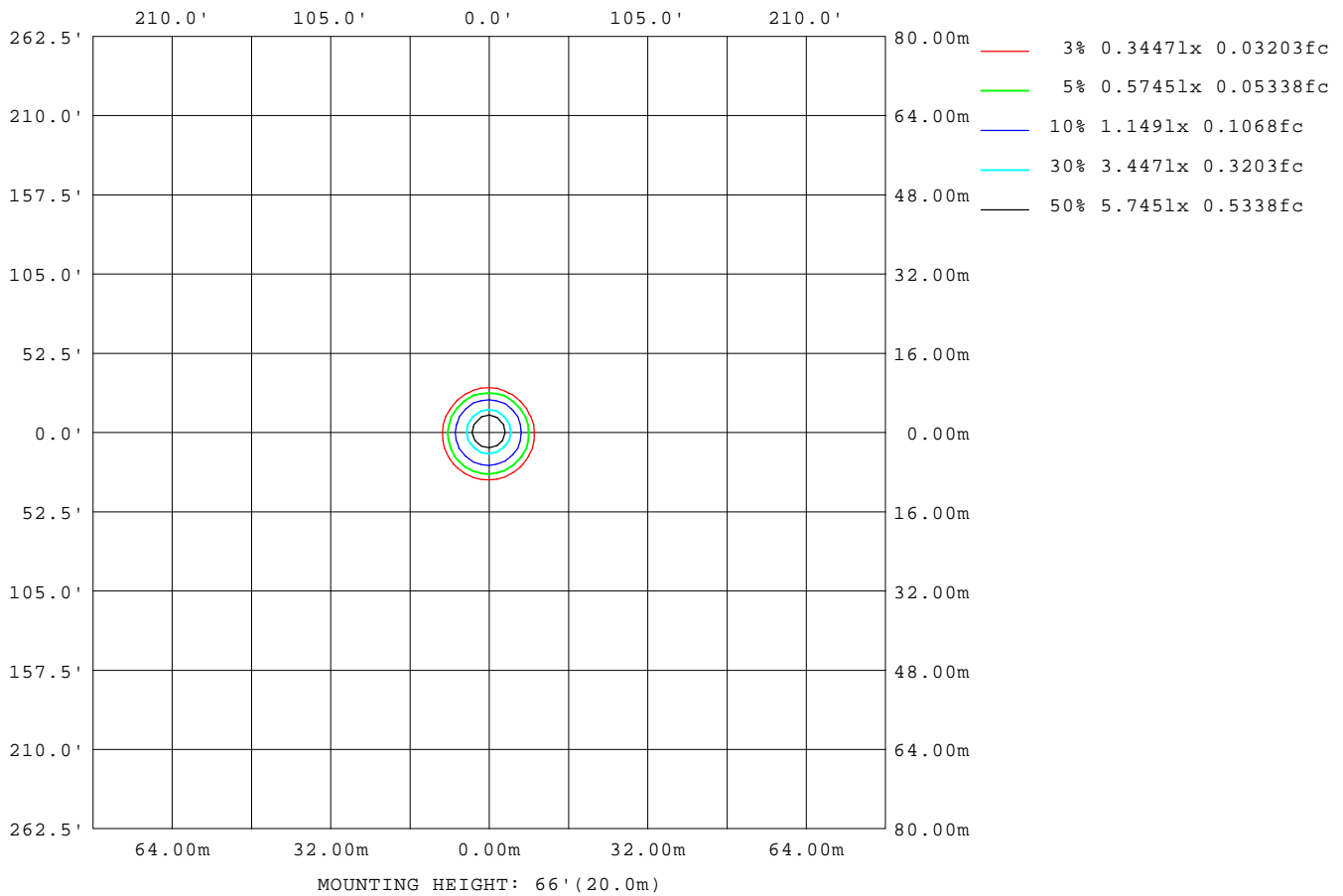
Note:The Curves indicate the illuminated area and the average illumination when the luminaire is at different distance.

C Range: 0 - 360DEG
C Interval: 30.0DEG
Test Speed: HIGH
Temperature:25.3℃
Operators:zoe
Test Date:2023-6-2

Range: 0 - 180DEG
Interval: 1.0DEG
Test System:EVERFINE GO-SPEX500_V1 SYSTEM V2.00.461
Humidity:65.0%
Test Distance:3.160m [K=1.0000]
Remarks: LAMP:CMA1306-0000-000N0U0A30G Ra:90
LENS: PM-1084 15R
DRIVER:9290 028 088 250mA
30minutes warm-up

ISOLUX DIAGRAM

Test:U:220.09V I:0.0559A P:11.930W PF:0.9667 Freq:49.99Hz Lamp Flux:896.707x1 lm		
NAME: 2318.203-ACOT-97	TYPE:	WEIGHT:
SPEC.: 3000K	DIM.:	SERIAL No.: 2306020712
MFR.: RISE	SUR.: 0.000572265m2	Shielding Angle:



C Range: 0 - 360DEG
C Interval: 30.0DEG
Test Speed: HIGH
Temperature: 25.3 °C
Operators: zoe
Test Date: 2023-6-2

Range: 0 - 180DEG
Interval: 1.0DEG
Test System: EVERFINE GO-SPEX500_V1 SYSTEM V2.00.461
Humidity: 65.0%
Test Distance: 3.160m [K=1.0000]
Remarks: LAMP: CMA1306-0000-000N0U0A30G Ra:90
LENS: PM-1084 15R
DRIVER: 9290 028 088 250mA
30minutes warm-up

LED Avg.L Report

Test:U:220.09V I:0.0559A P:11.930W PF:0.9667 Freq:49.99Hz Lamp Flux:896.707x1 lm		
NAME: 2318.203-ACOT-97	TYPE:	WEIGHT:
SPEC.: 3000K	DIM.:	SERIAL No.: 2306020712
MFR.: RISE	SUR.: 0.000572265m2	Shielding Angle:

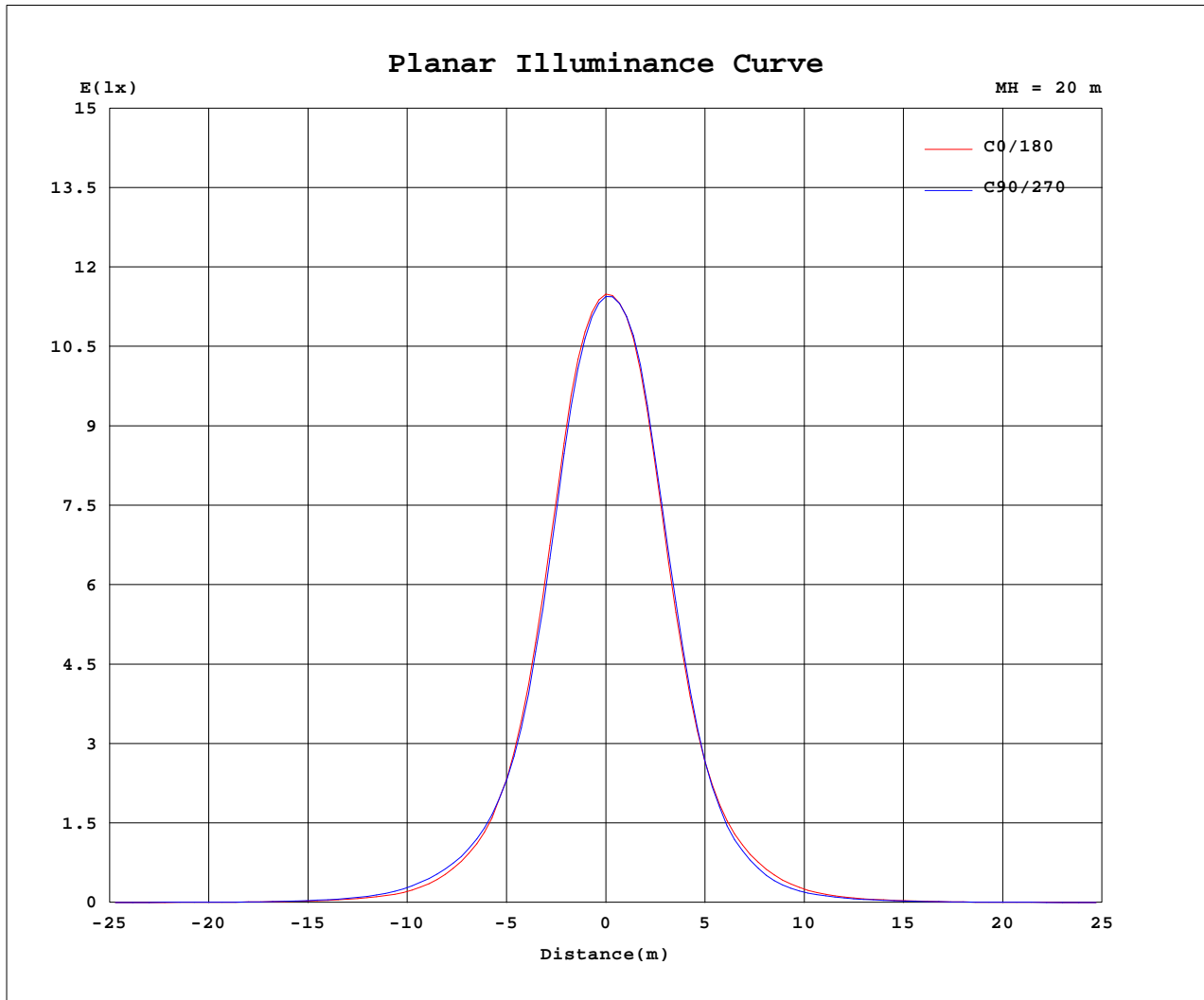
AvgL	cd/m2
L_0~180(65)av	16140
L_0~180(75)av	8063
L_0~180(85)av	1790
L_90~270(65)av	16396
L_90~270(75)av	8001
L_90~270(85)av	1629
L_45(65)av	16269
L_45(75)av	8100
L_45(85)av	1470

Standard: GB/T 29293-2012

C Range: 0 - 360DEG
C Interval: 30.0DEG
Test Speed: HIGH
Temperature:25.3℃
Operators:zoe
Test Date:2023-6-2

Range: 0 - 180DEG
Interval: 1.0DEG
Test System:EVERFINE GO-SPEX500_V1 SYSTEM V2.00.461
Humidity:65.0%
Test Distance:3.160m [K=1.0000]
Remarks: LAMP:CMA1306-0000-000N0U0A30G Ra:90
LENS: PM-1084 15R
DRIVER:9290 028 088 250mA
30minutes warm-up

Planar Illuminance Curve



C Range: 0 - 360DEG
 C Interval: 30.0DEG
 Test Speed: HIGH
 Temperature: 25.3 °C
 Operators: zoe
 Test Date: 2023-6-2

Range: 0 - 180DEG
 Interval: 1.0DEG
 Test System: EVERFINE GO-SPEX500_V1 SYSTEM V2.00.461
 Humidity: 65.0%
 Test Distance: 3.160m [K=1.0000]
 Remarks: LAMP: CMA1306-0000-000N0U0A30G Ra:90
 LENS: PM-1084 15R
 DRIVER: 9290 028 088 250mA
 30minutes warm-up

LUMINOUS DISTRIBUTION INTENSITY DATA

Test:U:220.09V I:0.0559A P:11.930W PF:0.9667 Freq:49.99Hz Lamp Flux:896.707x1 lm		
NAME: 2318.203-ACOT-97	TYPE:	WEIGHT:
SPEC.: 3000K	DIM.:	SERIAL No.: 2306020712
MFR.: RISE	SUR.: 0.000572265m2	Shielding Angle:

Table--1

UNIT: cd

C(DEG) (DEG)	0	30	60	90	120	150	180	210	240	270	300	330						
0	4583	4583	4583	4583	4583	4583	4583	4583	4583	4583	4583	4583						
5	3860	3813	3762	3791	3860	3965	4055	4095	4135	4111	4043	3941						
10	2050	2011	1921	1985	2047	2170	2288	2351	2417	2378	2289	2158						
15	869	850	847	873	907	964	987	983	1005	970	942	904						
20	375	388	397	422	438	450	438	417	410	388	379	370						
25	157	177	190	207	205	205	188	171	161	146	144	144						
30	67.3	76.1	84.2	89.2	90.2	85.4	77.9	71.9	69.7	65.4	62.5	62.4						
35	33.1	36.3	38.8	41.6	41.7	40.8	37.6	34.9	33.5	31.8	30.9	31.3						
40	15.7	16.5	17.5	18.9	19.0	19.2	18.1	16.7	16.3	15.7	15.4	15.4						
45	8.50	8.58	8.73	8.91	8.98	8.97	8.67	8.47	8.37	8.35	8.41	8.50						
50	7.08	7.19	7.34	7.46	7.55	7.47	7.23	7.00	6.88	6.85	6.97	7.02						
55	6.21	6.35	6.52	6.67	6.73	6.69	6.45	6.23	6.10	6.06	6.16	6.15						
60	5.30	5.44	5.60	5.74	5.78	5.75	5.57	5.41	5.30	5.22	5.21	5.25						
65	3.70	3.84	3.98	4.14	4.19	4.20	4.11	3.99	3.91	3.79	3.70	3.66						
70	2.18	2.24	2.30	2.41	2.49	2.54	2.51	2.46	2.43	2.33	2.24	2.18						
75	1.09	1.10	1.13	1.16	1.26	1.30	1.30	1.28	1.27	1.21	1.15	1.09						
80	0.41	0.42	0.44	0.47	0.50	0.53	0.53	0.51	0.50	0.47	0.42	0.40						
85	0.07	0.07	0.07	0.09	0.09	0.10	0.11	0.09	0.08	0.07	0.05	0.05						
90	0.00	0.00	0.00	0.00	0.00	0.00	0.00	0.00	0.00	0.00	0.00	0.00						
95	0.00	0.00	0.00	0.00	0.00	0.00	0.00	0.00	0.00	0.00	0.00	0.00						
100	0.00	0.00	0.00	0.00	0.00	0.00	0.00	0.00	0.00	0.00	0.00	0.00						
105	0.00	0.00	0.00	0.00	0.00	0.00	0.00	0.00	0.00	0.00	0.00	0.00						
110	0.00	0.00	0.00	0.00	0.00	0.00	0.00	0.00	0.00	0.00	0.00	0.00						
115	0.00	0.00	0.00	0.00	0.00	0.00	0.00	0.00	0.00	0.00	0.00	0.00						
120	0.00	0.00	0.00	0.00	0.00	0.00	0.00	0.00	0.00	0.00	0.00	0.00						
125	0.00	0.00	0.00	0.00	0.00	0.00	0.00	0.00	0.00	0.00	0.00	0.00						
130	0.00	0.00	0.00	0.00	0.00	0.00	0.00	0.00	0.00	0.00	0.00	0.00						
135	0.00	0.00	0.00	0.00	0.00	0.00	0.00	0.00	0.00	0.00	0.00	0.00						
140	0.00	0.00	0.00	0.00	0.00	0.00	0.00	0.00	0.00	0.00	0.00	0.00						
145	0.00	0.00	0.00	0.00	0.00	0.00	0.00	0.00	0.00	0.00	0.00	0.00						
150	0.00	0.00	0.00	0.00	0.00	0.00	0.00	0.00	0.00	0.00	0.00	0.00						
155	0.00	0.00	0.00	0.00	0.00	0.00	0.00	0.00	0.00	0.00	0.00	0.00						
160	0.00	0.00	0.00	0.00	0.00	0.00	0.00	0.00	0.00	0.00	0.00	0.00						
165	0.00	0.00	0.00	0.00	0.00	0.00	0.00	0.00	0.00	0.00	0.00	0.00						
170	0.00	0.00	0.00	0.00	0.00	0.00	0.00	0.00	0.00	0.00	0.00	0.00						
175	0.00	0.00	0.00	0.00	0.00	0.00	0.00	0.00	0.00	0.00	0.00	0.00						
180	0.00	0.00	0.00	0.00	0.00	0.00	0.00	0.00	0.00	0.00	0.00	0.00						

C Range: 0 - 360DEG
C Interval: 30.0DEG
Test Speed: HIGH
Temperature:25.3℃
Operators:zoe
Test Date:2023-6-2

Range: 0 - 180DEG
Interval: 1.0DEG
Test System:EVERFINE GO-SPEX500_V1 SYSTEM V2.00.461
Humidity:65.0%
Test Distance:3.160m [K=1.0000]
Remarks: LAMP:CMA1306-0000-000N0U0A30G Ra:90
LENS: PM-1084 15R
DRIVER:9290 028 088 250mA
30minutes warm-up